



charge stream™ desk stand

Made for Apple, Samsung,
and other Qi-enabled smartphones

USER MANUAL

Welcome

Thank you for purchasing the mophie charge stream desk stand. The desk stand is compatible with any Qi-enabled smartphone and will deliver up to 10W of fast-charging wireless power to compatible phones. The desk stand's sturdy base and adjustable charge pad allow you to use your device in either portrait or landscape orientation while it charges.

Package contains

- desk stand base
- desk stand support arm
- desk stand charge pad
- QC 2.0 wall adapter
- 1.49m micro-USB cable with integrated cable-management magnet

Features

- **Universal wireless charging:** Delivers up to 10W of power to compatible Qi-enabled smartphones; also charges mophie cases with wireless charging.
- **Optimized for Apple and Samsung fast charge:** Delivers the fastest charge your device can handle.
- **Fits most smartphones:** Adjusts to charge different-sized smartphones in landscape or portrait orientation.
- **Use your phone while it charges:** Holds your

phone at a convenient angle so you have access to all your favorite features.

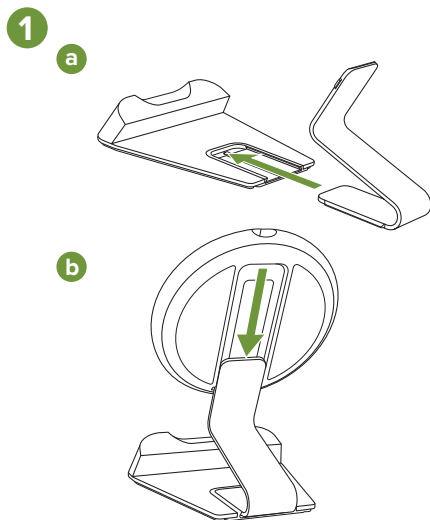
- **Charges through lightweight cases:** Delivers a charge through cases up to 3mm thick.
- **Sturdy design:** Steel frame and weighted base provide stability; secure, non-slip surface holds your smartphone without scratching it.
- **Detachable charge pad:** Can be removed from the desk stand and used on its own.
- **Included accessories:** Includes QC 2.0 wall adapter and 1.49m (4.9 ft) micro USB cable with integrated cable-management magnet.

Compatibility

- The charge stream desk stand will wirelessly charge Samsung and Apple Qi-compatible smartphones, mophie cases with wireless charging, and other smartphones with Qi wireless technology.
- The charge stream desk stand is optimized to deliver up to 7.5W of power to compatible Apple smartphones and up to 10W of power to compatible Samsung smartphones. mophie cases with wireless charging and other Qi-compatible smartphones will charge at the standard Qi charging power of up to 5W.
- Do not attempt to use the charge stream desk stand with wireless-charging devices that are not Qi-compatible.

Assembly and connections

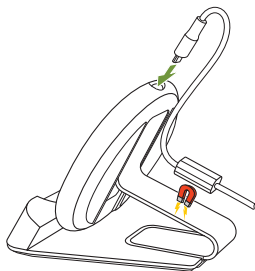
- 1a) Slide the desk stand support arm into the rear of the desk stand base.
- 1b) Slide the charge pad onto the support arm.



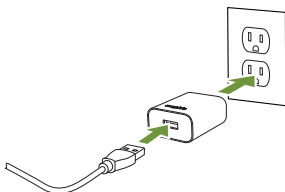
- 2a) Connect the supplied micro USB cable to the charge pad and attach the wire management magnet to the desk stand support arm. You can slide the cable through the wire-management magnet to eliminate extra slack as you adjust the charge pad up and down to change between portrait and landscape orientation.
- 2b) Connect the other end of the supplied micro USB cable to the supplied QC 2.0 wall adapter and plug the wall adapter into a wall outlet.

2

a



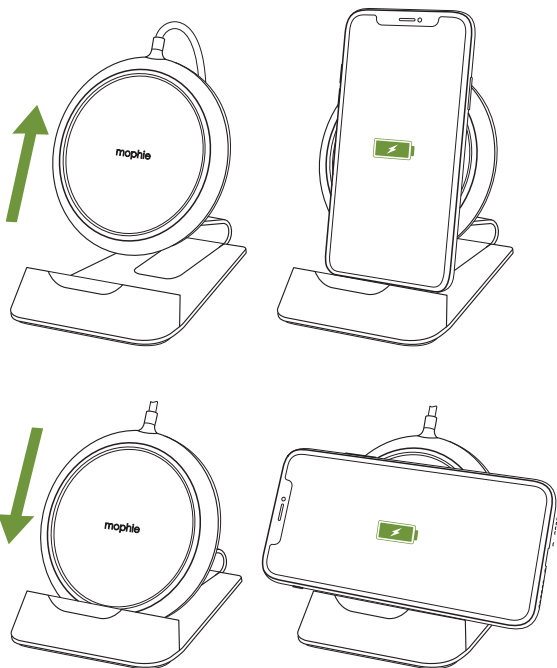
b



Note: You must use the supplied QC 2.0 wall adapter for the desk stand to function.

Using the charge stream desk stand

Place your wireless device against the charge stream desk stand's charge pad, making sure that the center of the wireless device is aligned with the center of the pad's charging surface. You can adjust the height of the charge pad to fit just about any Qi-compatible smartphone in either portrait or landscape orientation. Charging will begin on contact.



Desk stand charging status indicator

The bottom of the charge pad has an LED that indicates its charging status:

LED illuminated continuously:

- The wireless device is properly charging.

LED flashing:

- A metallic foreign object (keys, etc.) has been detected against the pad's charging surface. Remove the object.

Warranty

At mophie, we are dedicated to making the best quality products. To back this up, this product is warranted for 2 years. For full details regarding warranty terms and exclusions, please visit: mophie.com/warranty. This warranty does not affect any statutory rights that you may be entitled to. Keep a copy of your purchase receipt as proof of purchase. Be sure to register your product at mophie.com. Failure to register your product and/or provide proof of purchase may void the warranty.

Exclusions & limitations

Except for the limited warranty expressly set forth or to the extent restricted or prohibited by applicable law, mophie expressly disclaims any and all other warranties express or implied, including any

warranty of quality, merchantability, or fitness for a particular purpose, and you specifically agree that mophie shall not be liable for any special, incidental, indirect, punitive, or consequential damages of any type on any mophie product. In addition to and without limiting the generality of the foregoing disclaimers, the limited warranty does not, under any circumstances, cover the replacement or cost of any electronic device or personal property inside or outside of the mophie product.

You may have additional warranty rights depending on your country, state, or province. Further, some countries, states, and provinces do not allow the exclusion or limitation of incidental or consequential damages or exclusions or limitations on the duration of implied warranties, so the above may not apply to you. If any provision of the warranty is found unlawful, void, or unenforceable, that provision shall be deemed severable and shall not affect any remaining provision.

Customer service

Telephone: 1-888-8mophie (1-888-866-7443)

International: +1 (269) 743-1340

Web: www.mophie.com/cs

Warning

Read all instructions and warnings prior to using this

product. Improper use of this product may result in product damage, excess heat, toxic fumes, fire, or explosion, for which damages you (“Purchaser”), and not mophie llc (“Manufacturer”) are responsible.

- X-Ⓢ Do not store device in high-temperature environment, including heat caused by intense sunlight or other forms of heat. Do not place device in fire or other excessively hot environments.
- X-Ⓢ Do not disassemble this product or attempt to re-purpose or modify it in any manner.
- X-Ⓢ Do not attempt to power this device using any method, apparatus, or connection other than the device’s micro USB connector. For questions or instructions for the various ways to power the device refer to the illustrations in this user manual.
- X-Ⓢ Do not attempt to replace any part of this device.
- X-Ⓢ If this device is accessible to or may be used by a minor, purchasing adult agrees to be solely responsible for providing supervision, instruction, and warnings. Purchaser agrees to defend, indemnify, and hold Manufacturer harmless for any claims or damages arising from unintended use or misuse by a minor.
- X-Ⓢ All products have gone through a thorough quality assurance inspection. If you find that your device is excessively hot, is emitting odor,

is deformed, abraded, cut, or is experiencing or demonstrating an abnormal phenomenon, immediately stop all product use and contact Manufacturer.

- ✕ To comply with FCC RF exposure compliance requirements, this wireless charging device must be used with a separation distance of at least 10 cm from all persons.

Legal

This product is meant for use only in conjunction with the appropriate device. Please consult your device packaging to determine whether this product is compatible with your particular device. Manufacturer is not responsible for any damages to any device incurred through the use of this product. Manufacturer shall not in any way be liable to you or to any third party for any damages you or any third party may suffer as a result of use, intended or unintended, or misuse of this product in conjunction with any device or accessory other than the appropriate device for which this product is designed. Manufacturer will not be responsible for any damages you or any third party may suffer as a result of misuse of this product as outlined above. Purchaser agrees to defend, indemnify, and hold Manufacturer harmless for any claims or damages arising from unintended use or misuse, including use with an unintended device.

mophie, charge stream, Stay Powerful, mophie loves you, the five-circles design, and the mophie logo are trademarks of mophie inc. Apple is a trademark of Apple Inc. Samsung is a trademark of Samsung Electronics Co. Ltd. The 'Qi' symbol is a trademark of the Wireless Power Consortium. All rights reserved. Patents: mophie.com/patents.

This device complies with part 15 of the FCC Rules and RSS-Gen of IC Rules. Operation is subject to the following two conditions: (1) This device may not cause harmful interference, and (2) this device must accept any interference received, including interference that may cause undesired operation.

NOTE: This equipment has been tested and found to comply with the limits for a Class B digital device, pursuant to part 15 of the FCC Rules. These limits are designed to provide reasonable protection against harmful interference in a residential installation. This equipment generates, uses, and can radiate radio frequency energy and, if not installed and used in accordance with the instructions, may cause harmful interference to radio communications. However, there is no guarantee that interference will not occur in a particular installation.

If this equipment does cause harmful interference to radio or television reception, which can be

determined by turning the equipment off and on, the user is encouraged to try to correct the interference by one or more of the following measures:

- Reorient or relocate the receiving antenna.
- Increase the separation between the equipment and receiver.
- Connect the equipment into an outlet on a circuit different from that to which the receiver is connected.
- Consult the dealer or an experienced technician for help.

CAUTION: To comply with the limits of the Class B digital device, pursuant to Part 15 of the FCC Rules, this device must be used with certified peripherals and shielded cables. All peripherals must be shielded and grounded. Operation with non-certified peripherals or non-shielded cables may result in interference to radio or reception.

MODIFICATION: Any changes or modifications of this device could void the warranty.

STATEMENT OF COMPLIANCE

Hereby, ZAGG International declares that the radio equipment wireless charging pad is in compliance with Directive 2014/53/EU. The full text of the EU declaration of conformity is available at the following internet address: http://www.mophie.com/cert_red

WEEE DECLARATION

All of our products are marked with the WEEE symbol; this indicates that this product must NOT be disposed of with other waste. Instead it is the user's responsibility to dispose of their waste electrical and electronic equipment by handing it over to an approved re-processor, or by returning it to mophie inc. for reprocessing. For more information about where you can send your waste equipment for recycling, please contact mophie inc. or one of your local distributors.

 STAY POWERFUL™