



**HALO<sup>®</sup>**

**LIPSTICK CHARGER**

---

**POWERFUL UNIVERSAL  
PORTABLE CHARGER**

**OPERATING INSTRUCTIONS**

## **HALO LIPSTICK CHARGER**

From HALO, the LIPSTICK CHARGER is the definition of fashion meet function. This tiny lipstick is in fact a compact portable charger perfect for anyone to throw in a purse, backpack, small bag or back pocket. With it's 3000 mAh battery, this device can charge any small electronic devices, including but not limited to mobile phones, cameras, iPods, and gaming systems using standard USB output. The lipstick charger could easily be mistaken for the rouge in your make up bag, & its micro USB input allows for seamless recharge.

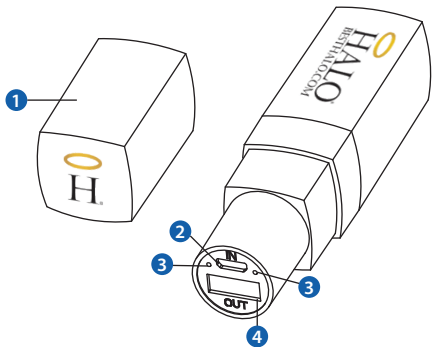
Please read the operating instructions carefully before using the HALO LIPSTICK CHARGER.

# CONTENTS

Included Items	1
Operating Instructions	3
Maintenance and Care	4
Safety Precautions	5
Specifications	6
Warranty and Contact Information	8

## INCLUDED ITEMS

- HALO LIPSTICK CHARGER
- Micro-USB Cable
- Operating Instructions



## LOCATION OF CONTROLS

- 1 | Cap
- 2 | Input Port
- 3 | LED Battery Indicator Lights
- 4 | Output Port

## **OPERATING INSTRUCTIONS**

Prior to first use, it is recommended to fully charge the HALO LIPSTICK CHARGER.

### **CHARGING THE LIPSTICK CHARGER**

Using the supplied Micro-USB cable, plug the micro-USB end of the cable into the micro-USB input port of the HALO LIPSTICK CHARGER and plug the other USB connector into a computer or an AC adapter with a USB 5V output.

### **CHARGING YOUR PERSONAL ELECTRONIC DEVICE**

Using the Micro-USB cable, plug the standard end of the USB connector into the USB output port of the HALO LIPSTICK CHARGER. You may also use your own USB cable that was supplied with your personal electronic device. The HALO LIPSTICK CHARGER will automatically begin charging your electronic device.

### **TURNING ON/OFF YOUR HALO LIPSTICK CHARGER**

The HALO LIPSTICK CHARGER will automatically turn on and begin charging as soon as it is plugged into your personal electronic device. To preserve the battery, the HALO LIPSTICK CHARGER will automatically turn off if the electronic device is fully charged and no longer drawing power. When the HALO

LIPSTICK CHARGER is manually unplugged from your device it will automatically turn off after 30 seconds.

## **MAINTENANCE AND CARE**

After prolonged use, the internal battery will become weak and the operation may become intermittent. When the battery is very low, the first battery indicator will flash to alert you to recharge the internal battery as soon as possible.

To maximize battery life: once the battery is fully discharged, immediately recharge (regardless of whether you plan to use this unit or not). If you do not plan to use the battery for an extended period of time (one week or longer), we recommend that you fully charge the battery. For longer periods of storage, please recharge the battery at least every two months to maintain the battery in optimum condition.

## **SAFETY PRECAUTIONS**

This HALO LIPSTICK CHARGER has been designed and manufactured to ensure your personal safety when used in the directed manner. Improper use can result in potential hazard.

Please read all safety and operating instructions carefully before installation and use. Keep these instructions handy for future reference.

- The HALO LIPSTICK CHARGER should not be used near water or wet areas such as bathtubs, showers, bathrooms, sinks, swimming pools or basements.
- To reduce the risk of fire or electric shock, do not expose the HALO LIPSTICK CHARGER to rain or moisture. Keep the HALO LIPSTICK CHARGER away from dripping, splashing, or any objects filled with liquids. Do not place anything on HALO LIPSTICK CHARGER.
- Keep away from heat sources, including but not limited to: open flame sources, radiators, stoves, ovens, cars, and amplifiers that produce heat.
- Do not expose HALO LIPSTICK CHARGER or batteries to fire or sunshine.
- Do not puncture, crush or subject to mechanical shock.
- Do not disassemble .
- Unplug the charger when batteries are fully charged or not in use.
- Li-ion batteries must be recycled. Do not dispose of in the trash

## SPECIFICATIONS

Model: HLC-3000

Battery Capacity: 3000mAh

Micro USB Input: 5V  1A

USB Output: 5V  1A

Dimensions (W x H x D): 90mm x 22mm x 22mm

Weight: 70 grams

Charging Time: ~1 hour 40 minutes

Working Temperature: 5°F to 120°F

## COMPLIANCE WITH FCC REGULATIONS

“This device complies with Part 15 of the FCC Rules. Operation is subject to the following two conditions: (1) this device may not cause

harmful interference, and (2) this device must accept any interference received, including interference that may cause undesired operation.”

“Warning: Changes or modifications to this unit not expressly approved by the party responsible for compliance could void the user’s authority to operate the equipment.”

“NOTE: This equipment has been tested and found to comply with the limits for a Class B digital device, pursuant to Part 15 of the FCC Rules. These limits are designed to provide reasonable protection against harmful interference in a



residential installation. This equipment generates, uses and can radiate radio frequency energy and, if not installed and used in accordance with the instructions, may cause harmful interference to radio communications.

However, there is no guarantee that interference will not occur in a particular installation. If this equipment does cause harmful interference to radio or television reception, which can be determined by turning the equipment off and on, the user is encouraged to try to correct the interference by one or more of the following measures:

- Reorient or relocate the receiving antenna.
- Increase the separation between the equipment and receiver.
- Connect the equipment into an outlet on a circuit different from that to which the receiver is connected. Consult the dealer or an experienced radio/TV technician for help.

## LIMITED WARRANTY

Halo International SEZC LTD warrants its products to be free from defects in material and workmanship under normal use.

Conditions are as follows:

- During the first 90 days from date of purchase, Halo International SEZC LTD will repair or replace the defective product.
- Halo International SEZC LTD will, subject to inspection, repair the defective product or replace it with a new or reconditioned unit. The return must be accompanied by a Return Merchandise Authorization (RMA) number to be issued upon request, and must be shipped prepaid. We do not offer shipping rebates at this time.
- Warranty is void if the product has been improperly handled or misused in any way, or if the label and/or bar-coded warranty label has been removed or tampered with.
- Where applicable, all requests for warranty returns must be accompanied by a proof of purchase.
- The warranty does not extend to the electronic equipment that is used or which incorporates with any of our products and accessories.

Halo International SEZC LTD shall not be held responsible for the improper use of its products.

- For all questions or exchange requests, please call 888-907-6274, or email us at [support@BestHALO.com](mailto:support@BestHALO.com)

This Limited Warranty sets forth the full scope of HALO's

obligations and liabilities with respect to the product. All implied warranties, including, without limitation, implied warranties of merchantability and fitness for a particular purpose, are limited to the duration of this Limited Warranty. In no event shall HALO be liable for any incidental, special, consequential or punitive damages or any damages or losses of or to electronic equipment or products that are used with any of HALO's products.



FOR TECHNICAL SUPPORT PLEASE  
EMAIL US AT:

**SUPPORT@BESTHALO.COM**

OR

CALL US AT: **888-907-6274**

**HALO INTERNATIONAL SEZC LTD**  
**68 WEST BAY ROAD**  
**GEORGETOWN, GRAND CAYMAN, KY1-1003**



**WWW.BESTHALO.COM**

Designed by Halo International  
SEZC LTD. in Cayman Islands  
Patent Pending. Made in China.

